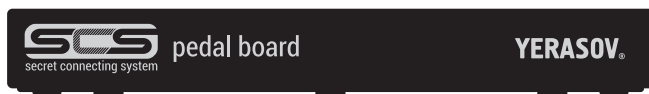


PEDAL BOARD

PB-4

PB-6

PB-8



Owner manual

Yerasov

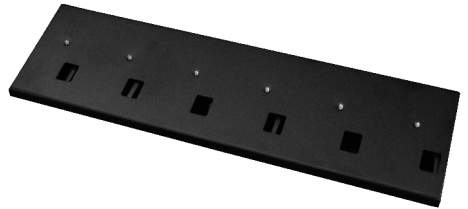
Attention! Please read this manual carefully before you start!

SAFETY PRECAUTIONS

Please protect this equipment from falling, impacts and excess humidity.

BEFORE YOU START

1. SCS (Secret Connecting System) pedalboard is designed to use with SCS series pedals. Before using an SCS Pedal Board, it must be prepared for the first run accordingly. Regardless of the model (PB-4/6/8), all of the SCS pedalboards are assembled to use and connected the same way.

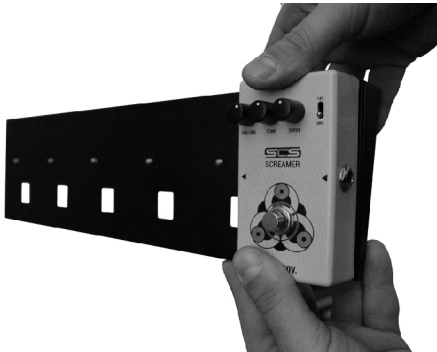


2. Unscrew the flat side-knurled thumbscrews holding the Pedal Board's bottom cover.

3. The cover has an additional inner mount, so slide it a little bit towards the screws and remove it from the Pedal Board.

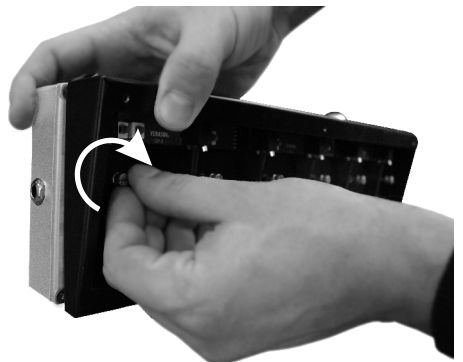


4. Pedal Board is now open.

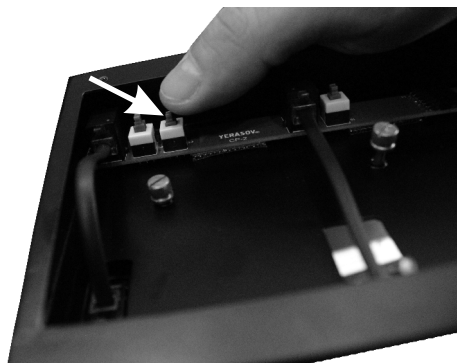
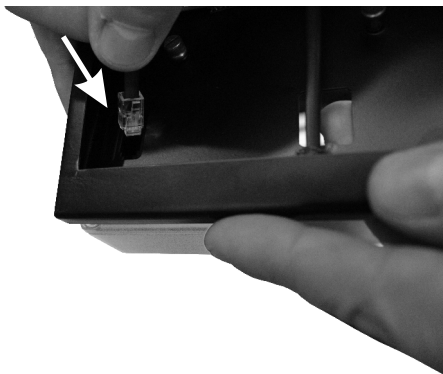


5. Place the pedals on the Pedal Board. The pedals' sequence is no important, except of FS-12 (refer to p.8).

6. Attach the SCS pedals to the Pedal Board with the captive screws.

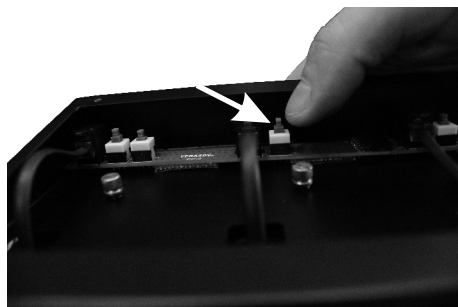


7. Connect the pedals to the Pedal Board with the dedicated cables, which are supplied accessories (spare cables included as well).

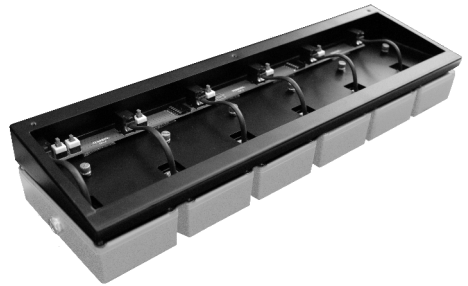


8. The SCS series has the FS-12 pedal, which can be used either as a stand-alone device or as a common bypass device for the whole Pedal Board. In this case it should be placed leftmost on the Pedal Board, while the rightmost place must not be empty. The S3 switch located on the Pedal Board's inner circuit board should be depressed when using the FS-12. In any other case of using SCS pedal in the leftmost position this switch should be pressed down.

9. **Attention!** All of the switches located on the Pedal Board's inner circuit board are depressed by default. If you are going to take a pedal off the Pedal Board for some reason (except the first and the last in line), please press down the appropriate S1 (or S2) bypass switch located on the Pedal Board's inner circuit board to avoid a signal path's gap in the effects sequence. Those switches are located close to the Pedal Board's pedal connectors.



10. This is how an assembled, ready-to-use Pedal Board looks from inside.



11. Putting back the bottom cover, assemble the Pedal Board.

12. Tighten the cover's side-knurled screws.



13. The Pedal Board is now ready to use. Guitar is connected to the rightmost pedal's input, while leftmost pedal's output is connected to the amplifier. Power supply for all the SCS pedals attached is cross-connected from inside of the Pedal Board. One external power supply unit connected to any pedal is enough to use.



TECHNICAL SPECIFICATIONS

Size, mm	PB-4.....	260x113x33
	PB-6.....	392x113x33
	PB-8.....	524x113x33
Weight, kg net	PB-4.....	0,7
	PB-6.....	1,0
	PB-8.....	1,3

PACKAGE CONTENTS

SCS Pedal Board.....	1 pcs
Connection cable for	
PB-4.....	5 pcs
PB-6.....	7 pcs
PB-8.....	9 pcs
Owner manual.....	1 pcs
Cardboard box.....	1 pcs
Pedal Board cover.....	1 pcs

FOR NOTES

YERASOV MUSIC CORPORATION
www.yerasov.ru e-mail: sale@yerasov.ru